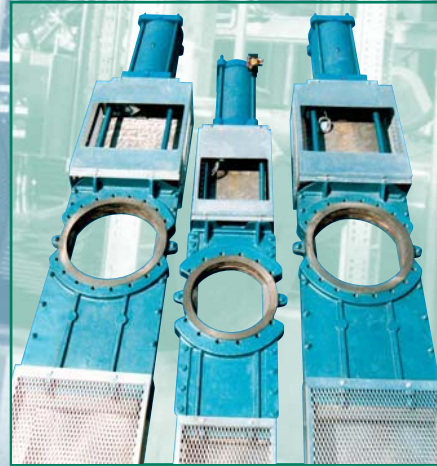
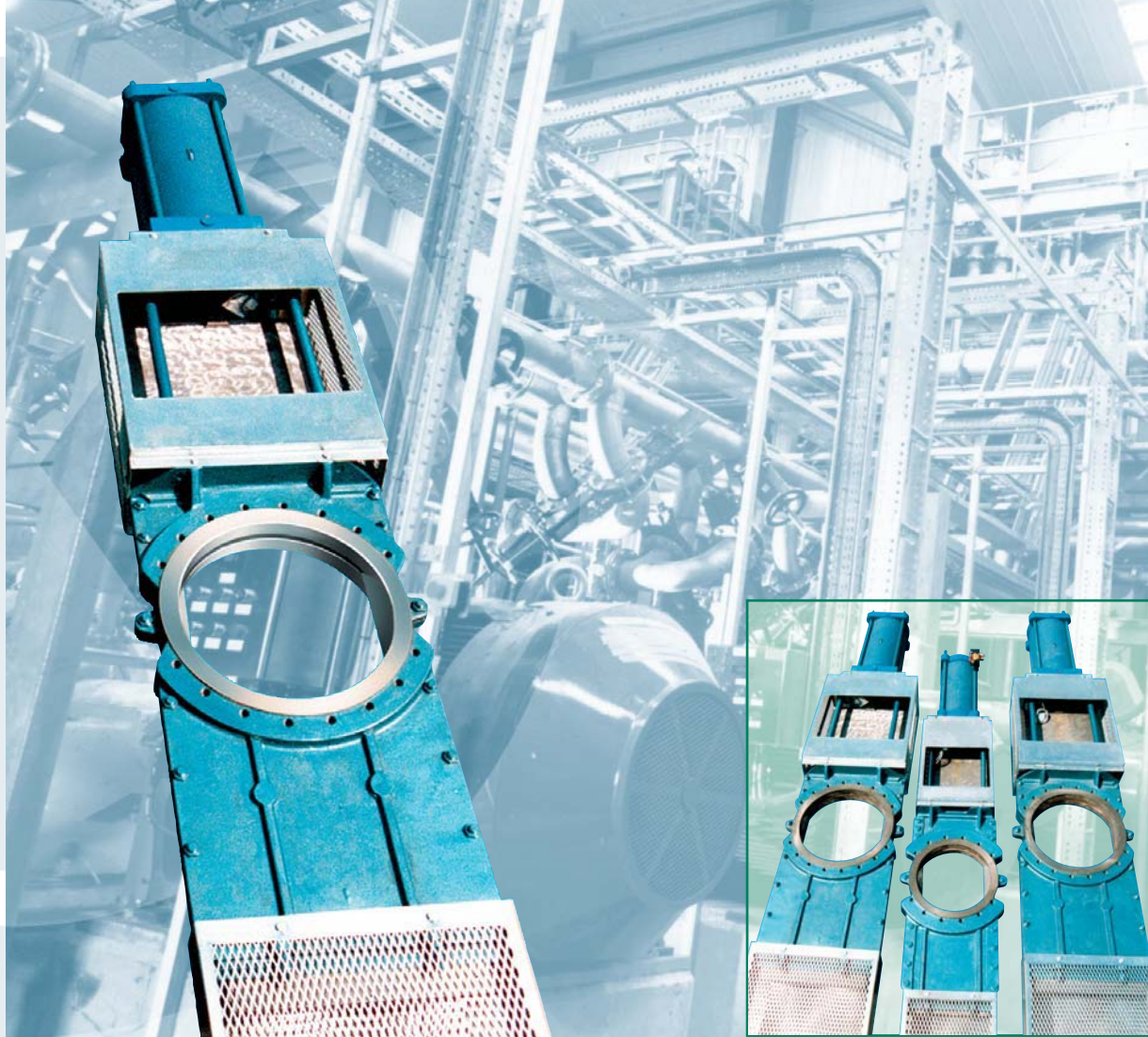




**KEMPSTER
ENGINEERING**
KNIFE GATE VALVES

TYPE KV6



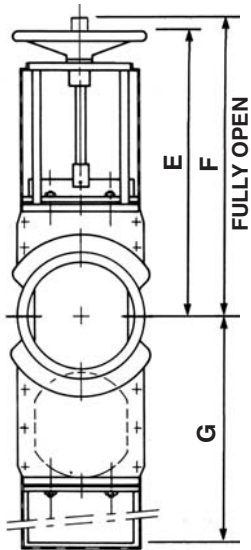
**Paper & Pulp
Junk Cleaning
Through Going Plate
Metal Seated**



2002/262



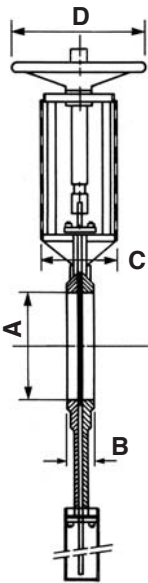
TYPE KV6



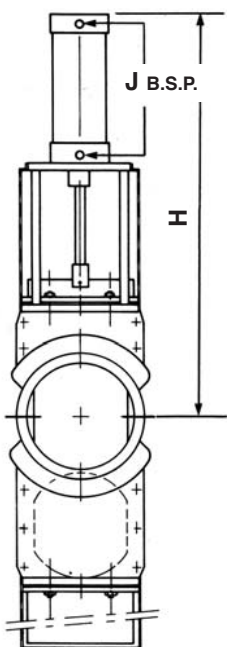
Metal seated through-going plate Knife Gate Valve for use with slurries, and heavy paper stocks containing solids or inclusions which cause blockage in the slideways of other valve types. Applications include junk trap discharge etc.

- VALVE BODY:** Manufactured from cast iron, bronze, aluminium, carbon and stainless steel
- BLADE:** Manufactured from stainless steel, treated for compatibility when used with stainless steel body
- SPINDLE:** 'Rising spindle' design manufactured from stainless steel
- GLAND PACKING:** Mica-lube cotton, alternatively PTFE or other grade to suit application
- FACINGS:** To suit flanges BS EN1092 NP10, NP16, ANSI 150, DIN ND10, BST 'D' or 'E' & others
- PNEUMATIC CYLINDERS:** 'ISO' type with stainless steel piston rods, sized to suit 5 bar operating air pressure

Optional extras include locking facilities, alternative actuators, limit and proximity switches and solenoid valves.



| Valve Nominal Bore* (mm) | Max Working Pressure (bar) | Max Differential Pressure (bar) |
|-----------------------------|-------------------------------|------------------------------------|
| 50-200 | 7 | 7 |
| 250-400 | 5 | 5 |
| 500 600 | 3 | 3 3 |



| Bore* A (mm) | B (mm) | C (mm) | D (mm) | E (mm) | F (mm) | G (mm) | Weight (kg) | H (mm) | BSP J (inch) | ISO Cyl Bore (mm) |
|--------------------|-----------|-----------|-----------|-----------|-----------|-----------|----------------|-----------|--------------------|-------------------------|
| 50 | 62 | 133 | 175 | 298 | 348 | 220 | 28 | 500 | 1/2 | 100 |
| 80 | 62 | 133 | 175 | 337 | 417 | 298 | 32 | 570 | 1/2 | 100 |
| 100 | 64 | 133 | 254 | 416 | 489 | 355 | 38 | 669 | 1/2 | 100 |
| 125 | 66 | 133 | 254 | 460 | 560 | 440 | 45 | 783 | 1/2 | 125 |
| 150 | 68 | 159 | 254 | 570 | 681 | 495 | 70 | 918 | 1/2 | 125 |
| 200 | 70 | 159 | 305 | 645 | 803 | 600 | 90 | 1099 | 3/4 | 160 |
| 250 | 76 | 197 | 305 | 747 | 969 | 740 | 116 | 1233 | 3/4 | 160 |
| 300 | 80 | 197 | 380 | 855 | 1120 | 885 | 160 | 1376 | 3/4 | 160 |
| 350 | 96 | 220 | 380 | 1000 | 1353 | 1000 | 220 | 1562 | 3/4 | 200 |
| 400† | 102 | 220 | 535† | 1092 | 1492 | 1125 | 266 | 1771 | 1 | 250 |
| 500† | 111 | 267 | 535† | 1175 | 1683 | 1431 | 340 | 1988 | 1 | 320 |
| 600† | 114 | 210 | 535† | 1359 | 1969 | 1646 | 380 | 2217 | 1 | 320 |

Cylinder operation safety guard mandatory

† Gearbox recommended for these sizes

Kempster Engineering Ltd

Unit 1 Astra Centre Royle Barn Road Rochdale Lancashire OL11 3DT U.K.

Tel: +44 (0) 1706 34 55 99 Fax: +44 (0) 1706 65 73 96

Email: sales@kempsteruk.com

